



**REGIONAL SPECIALISED METEOROLOGICAL CENTRE-TROPICAL CYCLONES, NEW DELHI  
TROPICAL WEATHER OUTLOOK**

**DEMS-RSMC TROPICALCYCLONES NEW DELHI DATED 03.10.2022**

**TROPICAL WEATHER OUTLOOK FOR NORTH INDIAN OCEAN (THEBAY OF BENGAL OF BENGAL AND ARABIAN SEA) VALID FOR NEXT 120 HOURS ISSUED AT 0600 UTC OF 03.10.2022 BASED ON 0300 UTC OF 03.10.2022.**

**BAY OF BENGAL:**

UNDER THE INFLUENCE OF THE CYCLONIC CIRCULATION OVER THE WESTCENTRAL AND ADJOINING NORTHWEST BAY OF BENGAL (BOB), A LOW PRESSURE AREA HAS FORMED OVER WESTCENTRAL BOB AND NEIGHBOURHOOD AT 0300 UTC OF TODAY, THE 3<sup>RD</sup> OCTOBER, 2022. IN ASSOCIATION WITH THE SYSTEM, BROKEN LOW AND MEDIUM CLOUDS WITH EMBEDDED INTENSE TO VERY INTENSE CONVECTION LAY OVER WESTCENTRAL & ADJOINING SOUTHWEST BOB. MINIMUM CLOUD TOP TEMPERATURE IS MINUS 93 DEGREE CELCIUS.

SCATTERED TO BROKEN LOW AND MEDIUM CLOUDS WITH EMBEDDED INTENSE TO VERY INTENSE CONVECTION LAY OVER BOB, NORTH OF LAT 10<sup>0</sup>N. SCATTERED LOW AND MEDIUM CLOUDS WITH EMBEDDED MODERATE TO INTENSE CONVECTION LAY OVER ANDAMAN SEA AND GULF OF MARTABAN.

**PROBABILITY OF CYCLOGENESIS (FORMATION OF DEPRESSION) DURING NEXT 120 HRS:**

24 HOURS	24-48 HOURS	48-72 HOURS	72-96 HOURS	96-120 HOURS
NIL	NIL	NIL	NIL	NIL

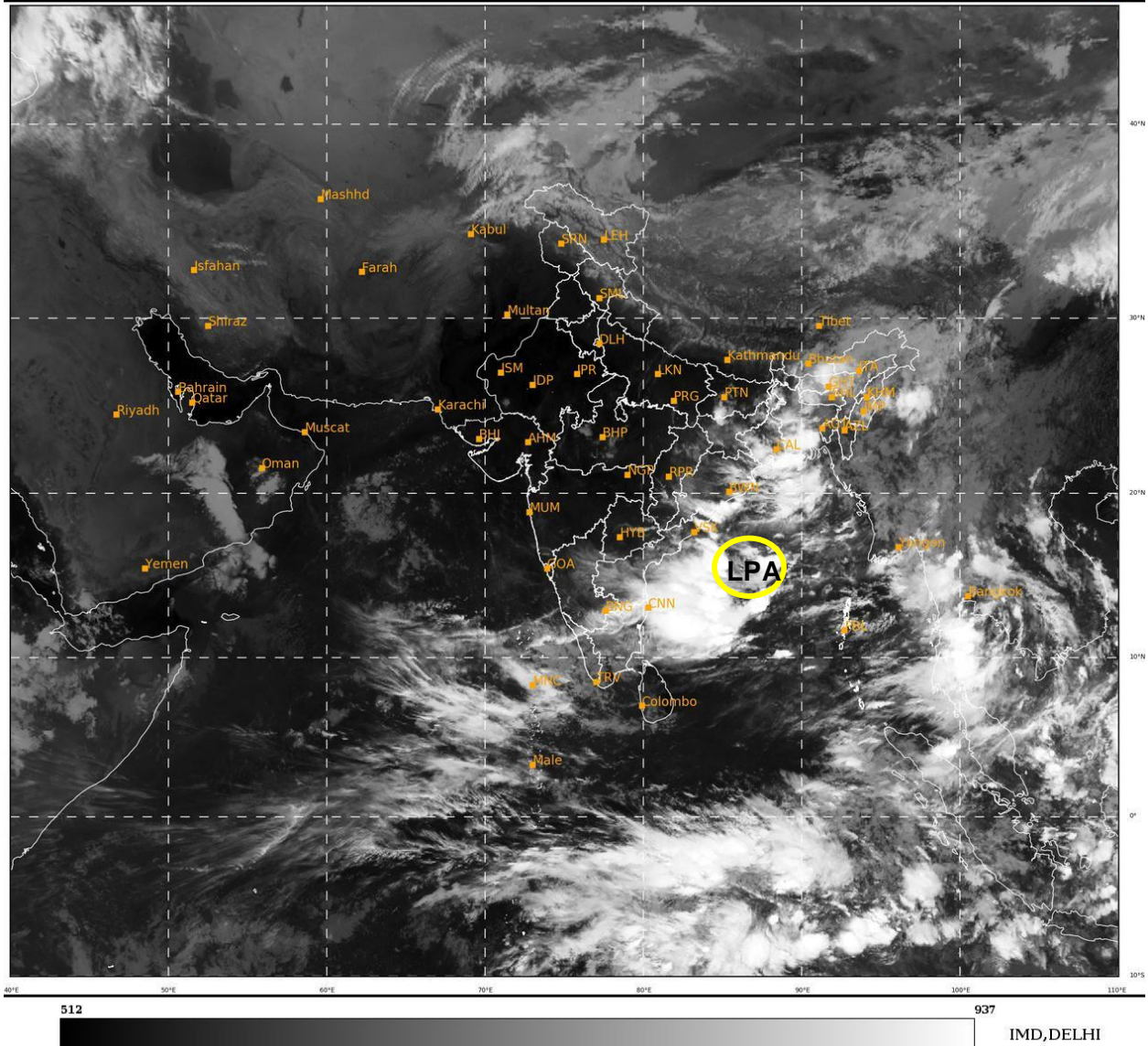
**ARABIAN SEA:**

SCATTERED TO BROKEN LOW AND MEDIUM CLOUDS WITH EMBEDDED MODERATE TO INTENSE CONVECTION LAY OVER SOUTHEAST ARABIAN SEA AND LAKSHADWEEP ISLANDS AREA.

**PROBABILITY OF CYCLOGENESIS (FORMATION OF DEPRESSION) DURING NEXT 120 HRS:**

24 HOURS	24-48 HOURS	48-72 HOURS	72-96 HOURS	96-120 HOURS
NIL	NIL	NIL	NIL	NIL

**Remarks:** NIL



LPA: LOW PRESSURE AREA